

PRODUCT DATA SHEET

4 Post adjustable Steel rack

Features:

- Standard open frame rack equipped with 19" format mounting posts.
- U shaped rails 3"x1 1/4"tapped both front and rear with EIA compliant RMS space.
- Meets or Exceeds EIA-310D Standards.
- Base with holes for floor anchoring.
- All mounting posts are clearly with RU space markings.
- Adjustable depth from 24"-36".
- Available accessories include: Fixed and sliding shelves, keyboard shelves, cable managers, PDUs and others.
- Stocked in 28U and 45U heights; other height from 16U to 47U can be special ordered.
- Flat package for inventory space saving and lower transportation cost.

Standards:

Complies with ANSI/EIA RS-310-D, IEC297-2, DIN41491; PART1, DIN41494; PART7,GB/3047.2-92 standards.

Material:

SPCC cold rolled steel

Load Capacities:

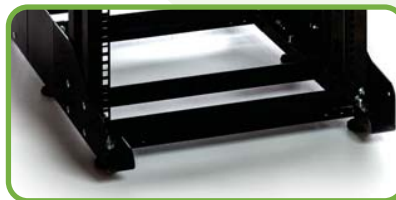
16U-22U Static Loading Capacity: 300kg
25U-45U Static Loading Capacity: 600kg

Degree of Protection:

Ip20

Thickness of Steel:

Mounting: 1.8mm
Base Angle: 3.0mm
Top Angle: 3.0mm
Adjustable Space Bar: 1.8mm



Surface treatment:

Degreasing, pickling, phosphoric, dip-coat primed, powder coat.

Colors options:

Standard: RAL9004/9005 BLACK. Available in RAL7035-COMPUTER GRAY and RAL9010-CREAM WHITE by special order.

Ordering information:

Part Number	Height	RUs	Color
NTFR4PXXSTBK	7 FT	45	BLACK
NTFR4PXXSTBK	4 FT	28	BLACK

